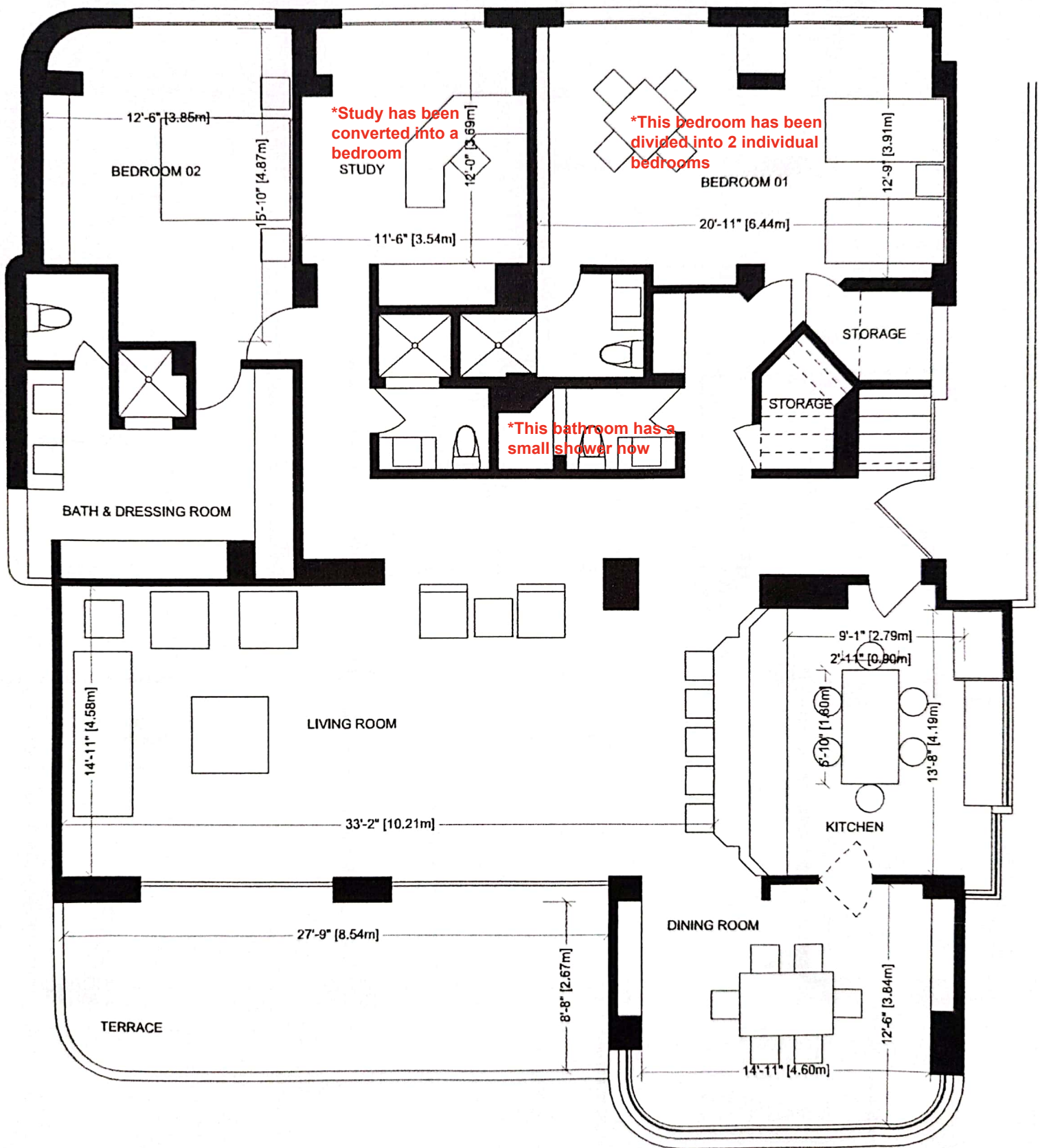


CRISTIAN
 PARRACA SANCHEZ
 ARQUITECTO

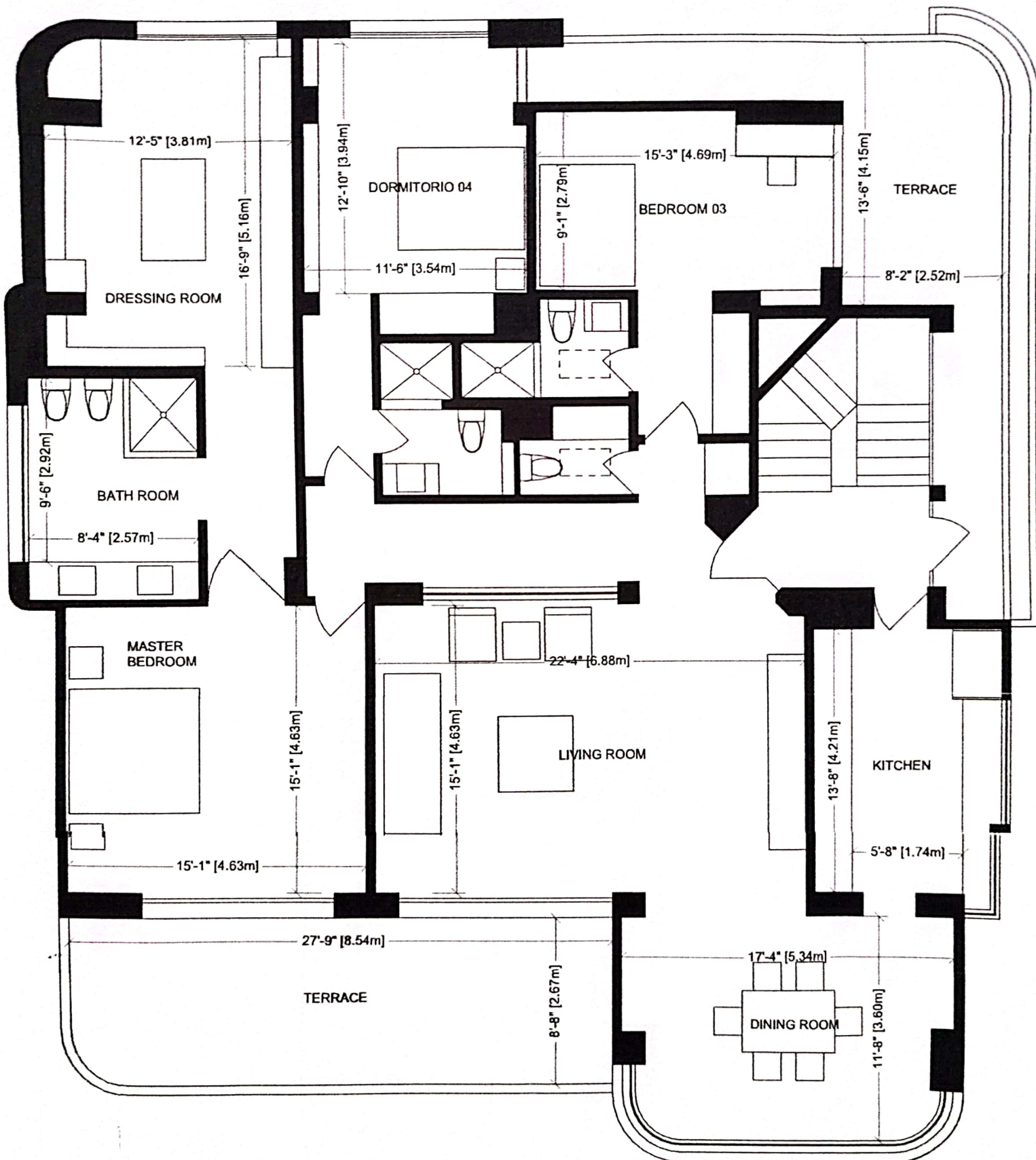


FIRST FLOOR

251 m²
2700 sqf



CRISTIAN
PARRACA SANCHEZ
ARQUITECTO

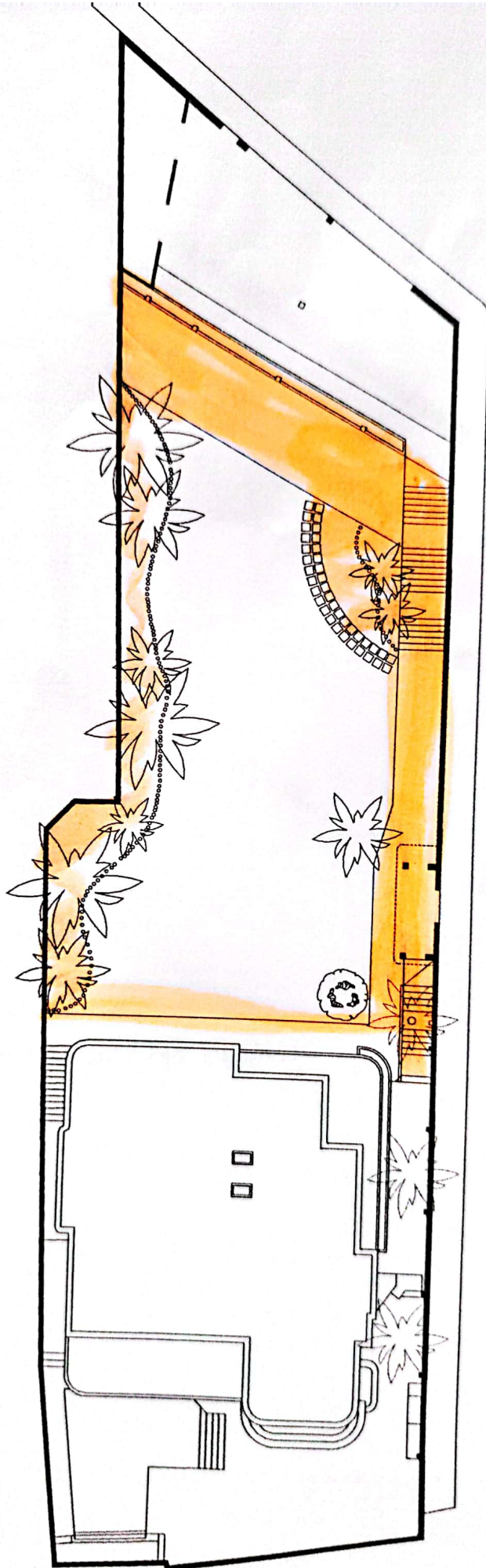


SECOND FLOOR

263 m²
2830 sqf

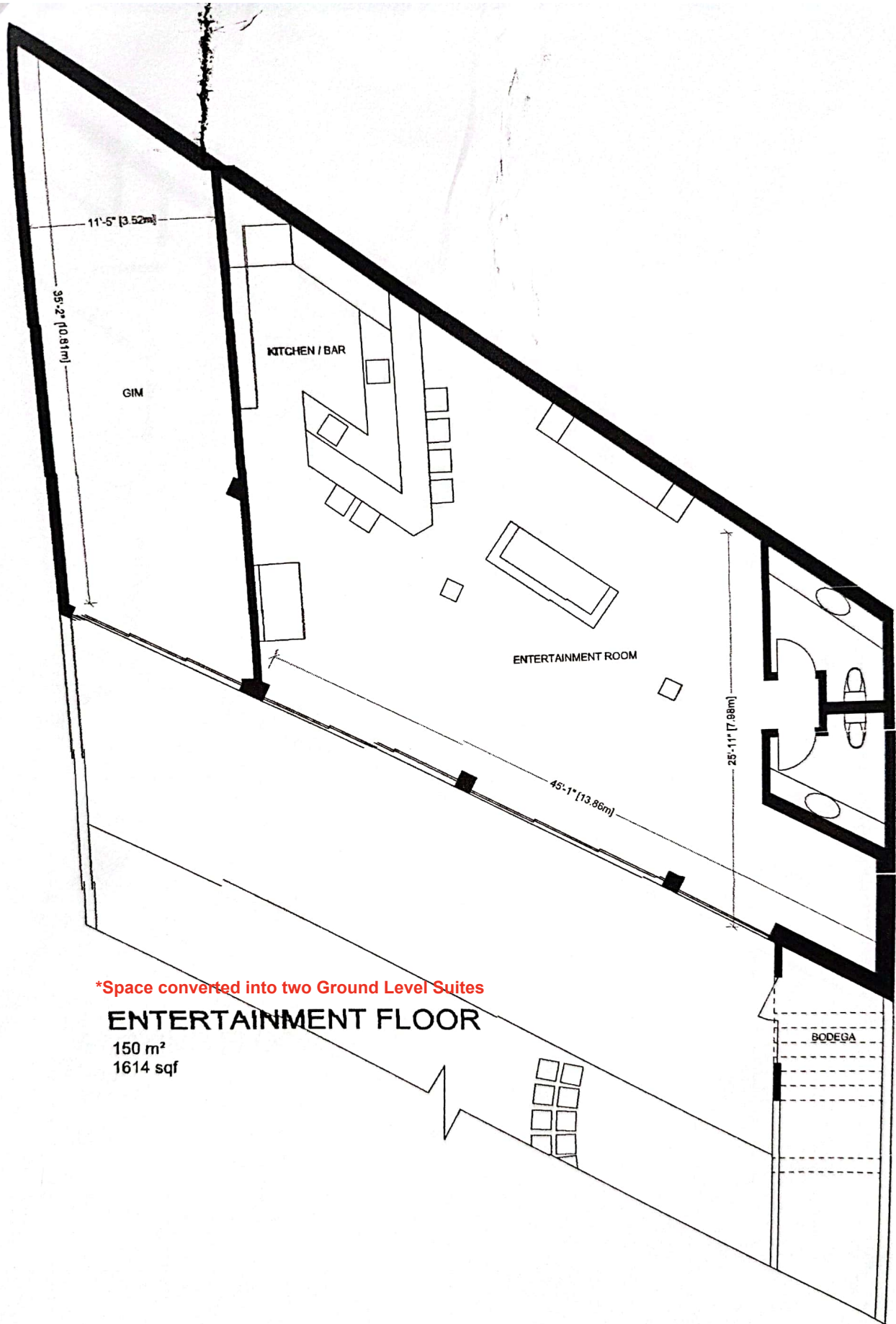


CRISTIAN
PÁRRACA SÁNCHEZ
ARQUITECTO



IMPLANTATION
1170 m²
12581.78 m²





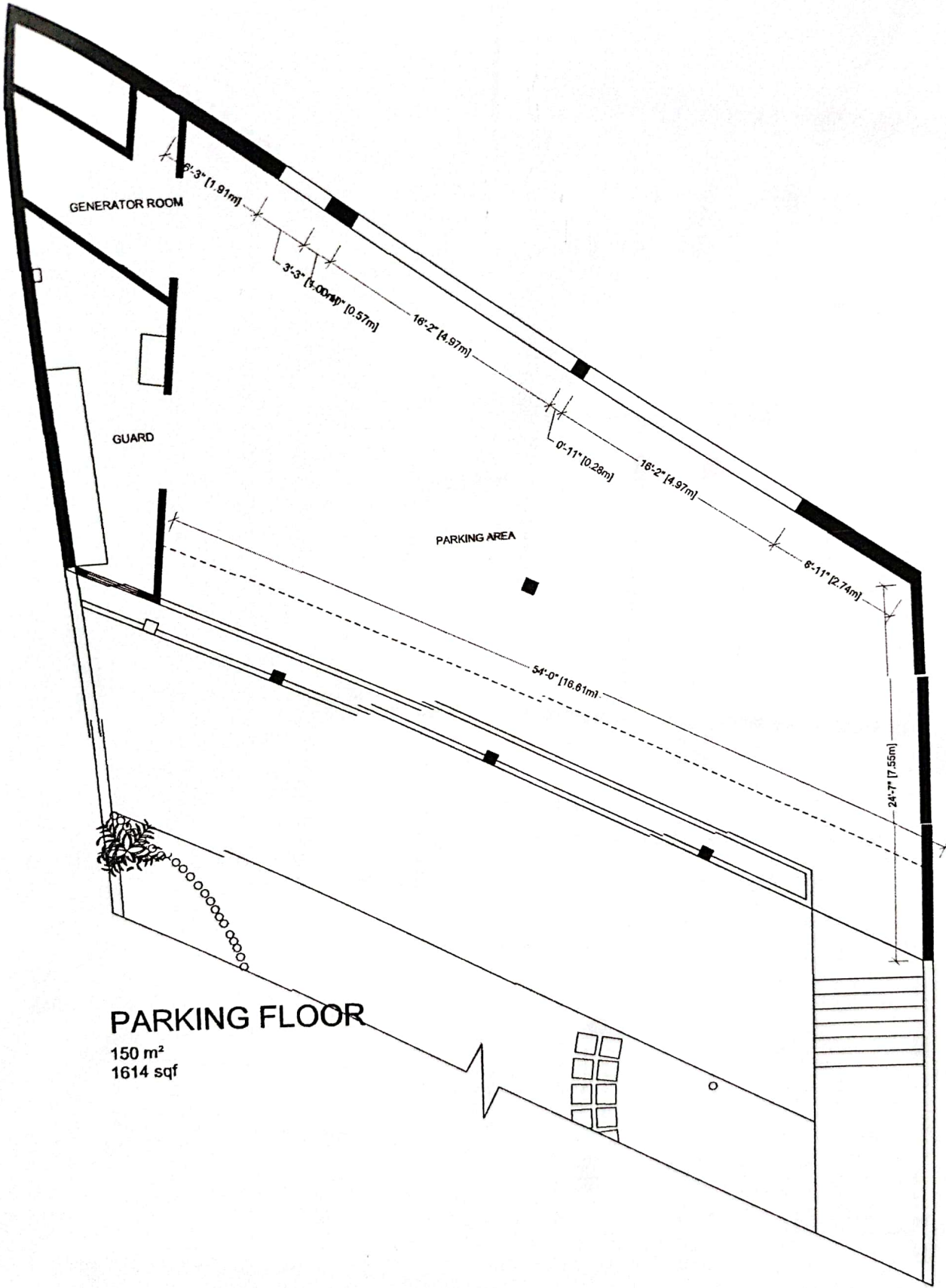
*Space converted into two Ground Level Suites

ENTERTAINMENT FLOOR

150 m²
1614 sqf



CRISTIAN
PÁRRACA SÁNCHEZ
ARQUITECTO



PARKING FLOOR

150 m²
1614 sqf



CRISTIAN
PÁRRACA SÁNCHEZ
ARQUITECTO